

FITFLEET-EXCAVATOR-2000HR-CVA

PM Checklist

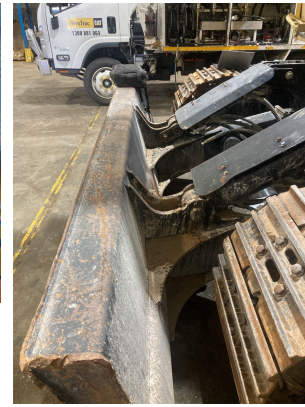
● 1 ● 0 ● 122 ● 6

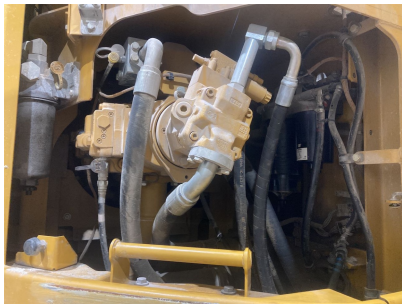
Inspection Number	22211172	Customer No	2969824372
Serial Number	XBE00602	Customer Name	AUSTRALIAN HAMMER SUPPLIES HIRE PTY LTD
Make	CATERPILLAR	Customer Phone	0436021631
Model	335	Customer Email	matt@hammerhire.com. au
Equipment Family	Medium Hydraulic Excavator	Work Order	sc75371
Asset ID	AHSH138	Completed On	16/04/2025 3:04:12 PM
SMU	6138.09 Hours	Inspector	Bradley Gale
Location	32 Williamson Rd, Ingleburn, New South Wales 2565, Australia	PDF Generated On	16/04/2025
Coordinates	0, 0, 0		
Technician			

General Info & Comments

● General info/Comments NORMAL

Comments: Completed 2000 hour service as per procedure
 Changed engine oil and filter
 Changed fuel filters
 Changed air cleaners
 Changed cabin air cleaners
 Changed blow by filter
 Changed engine belt
 Carried out valve lash/inspection
 Inspected machine thoroughly
 Changed hydraulic oil
 Changed hydraulic oil filters
 Tested grease system
 Found cabin plastic to come off secured with clips stuck in frame of cab
 Found fire extinguishers out of date
 Customer replaced with new extinguishers in date
 Changed final drive oil
 Changed swing motor oil
 Completed all inspections as per work procedure
 Completed engine oil filter cut







TASK SAFETY INSTRUCTIONS - Revision Number: 02 Date: 25th September 2023

- | | |
|--|------|
| ● 1.1 Wear Correct PPE at all times | PASS |
| ● 1.2 All isolation and safe work procedures must be followed | PASS |
| ● 1.3 Identify task hazards and controls utilising hierarchy or controls model | PASS |
| ● 1.4 Ensure a competent operator and spotter is utilised to move mobile equipment | PASS |
| ● 1.5 Ensure all mobile equipment is fundamentally stable | PASS |
| ● 1.6 Ensure three points of contact is maintained during access and egress | PASS |
| ● 1.7 Ensure acceptable housekeeping standards are maintained at all times | PASS |

MACHINE GENERAL RUNNING CHECKS

- | | |
|---|------|
| ● 2.1 Check all work lights, beacon & reverse alarm for operation | PASS |
| ● 2.2 Test all dash warning lights, gauges and audible alarms for correct operation | PASS |

- | | |
|---|------|
| ● 2.3 Check idle timer for correct shut down operation | PASS |
| ● 2.4 Check operation of all three emergency stop buttons | PASS |
| ● 2.5 Check operation of horn | PASS |
| ● 2.6 Check operation of reverse camera | PASS |
| ● 2.7 Check alternator charge voltage - ACTUAL_____V | PASS |



- | | |
|--|------|
| ● 2.8 Check operation of auto grease system by manually activating timer | PASS |
| ● 2.9 Check fire system control panel for 'Normal' | N/A |
| ● 2.10 Test hydraulic lock out function operation | PASS |
| ● 2.11 Check window wiper and washer operation | PASS |

PM SAFETY GENERAL INSPECTION

- | | |
|--|------|
| ● 3.1 Visually ensure all guards, shields and covers are in place and in good condition to ensure personal are protected from rotating parts | PASS |
| ● 3.2 Check condition of machine identification signage | PASS |
| ● 3.3 Inspect ROPS/FOPS condition | PASS |

PM BRAKING SYSTEM

● 4.1 Test travel brakes – Ensure the machine comes to a stop when travel controls are released *PASS*

● 4.2 Test travel brakes – Ensure the brakes hold on a suitable slope *PASS*

PM FIRE SUPPRESSION SYSTEM

● 5.1 Ensure fire suppression bottle and components are securely mounted and in good condition *N/A*

● 5.2 Ensure fire suppression is correctly charged *N/A*

● 5.3 Inspect last charge date - ACTUAL _____ *N/A*

● 5.4 Check all fire extinguishers are securely mounted and in good condition *PASS*

● 5.5 Check all fire extinguishers are correctly charged *PASS*

● 5.6 Inspect last charge date - ACTUAL _____ *FAIL*

Comments: Both fire extinguishers are out of date on tag but have sufficient charge in them.



PM ENGINE

● 6.1 Perform engine valve set *PASS*

● 6.2 Inspect air intake system hoses, pipes, clamps for signs of dirt ingress *PASS*

● 6.3 Inspect engine for oil or fuel leaks *PASS*

● 6.4 Inspect engine components for missing clamps *PASS*

●	6.5 Inspect exhaust system for signs of leaks, loose bolts or missing clamps	PASS
●	6.6 Inspect turbo for security and signs of leaks	PASS
●	6.7 Inspect condition of exhaust lagging	N/A
●	6.8 Inspect engine mounts for condition and loose hardware	PASS
●	6.9 Inspect alternator mount condition and adjustment	PASS
●	6.10 Inspect wiring condition and security	PASS
●	6.11 Clean engine breather	PASS
●	6.12 Replace outer air filter	PASS
●	6.13 Replace inner air filter	PASS
●	6.14 Replace/Check/Adjust engine belts	PASS



●	6.15 Carry out engine valve set	PASS
---	---------------------------------	------

PM ENGINE COOLING SYSTEM

●	7.1 Check coolant level	PASS
●	7.2 Check condition of radiator cap	PASS
●	7.3 Check condition of radiator core and blow out	PASS

●	7.4 Check cooling system for signs of leaks	PASS
●	7.5 Check hose and clamp condition	PASS
●	7.6 Inspect fan condition and operation	PASS
●	7.7 Inspect radiator and fan guard condition	PASS
PM SWING TRANSMISSION		
	8.1 Inspect swing transmission for signs of leaks	
	8.2 Inspect swing transmission oil level	
PM HYDRAULIC SYSTEM		
●	9.1 Check hydraulic oil level	PASS
●	9.2 Inspect hydraulic cylinders for leaks and security	PASS
●	9.3 Inspect hydraulic hoses for leaks, damage, security	PASS
●	9.4 Inspect hydraulic pump condition, leaks, security	PASS
●	9.5 Check Pilot Accumulator operation as per OEM Maintenance Procedure - Test Boom Down Functionality with engine off	PASS
PM FINAL DRIVES		
●	10.1 Inspect LHS final drive mount condition for leaks and security	PASS
●	10.2 Inspect LHS oil level and mag plug condition	PASS
●	10.3 Inspect RHS final drive mount condition for leaks and security	PASS
●	10.4 Inspect RHS oil level and mag plug condition	PASS

PM UNDERCARRIAGE

- | | |
|---|------|
| ● 11.1 Inspect LHS track tension | PASS |
| ● 11.2 Inspect RHS track tension | PASS |
| ● 11.3 Inspect tracks for loose/missing bolts | PASS |
| ● 11.4 Inspect load and carrier rollers for signs of leaks | PASS |
| ● 11.5 Inspect idlers for signs of leaks | PASS |
| ● 11.6 Inspect sprocket segments condition | PASS |
| ● 11.7 Inspect track frame for cracks, lose or missing hardware | PASS |

PM FRAME AND BODY

- | | |
|---|------|
| ● 12.1 Check panels for damage and security | PASS |
| ● 12.2 Check access steps and walkway condition | PASS |
| ● 12.3 Inspect boom condition – cracks, missing clamps, damaged pipes, excessive movement, lubrication | PASS |
| ● 12.4 Inspect stick condition – cracks, missing clamps, damaged pipes, excessive movement, lubrication | PASS |
| ● 12.5 Inspect quick hitch condition and operation | PASS |
| ● 12.6 Inspect bucket condition – cracks, wear, damage, mounts | PASS |
| ● 12.7 Inspect GET condition and hardware | PASS |

PM ELECTRICAL SYSTEM

- | | |
|--------------------------------|------|
| ● 13.1 Check battery condition | PASS |
|--------------------------------|------|

●	13.2 Check battery terminal condition	PASS
---	---------------------------------------	------

●	13.3 Check battery security	PASS
---	-----------------------------	------

●	13.4 Check battery box drain is clear	PASS
---	---------------------------------------	------

●	13.5 Check wiring condition and security	PASS
---	--	------

PM GREASE SYSTEM		
------------------	--	--

●	14.1 Check all points for acceptable lubrication	PASS
---	--	------

●	14.2 Inspect grease system operation	PASS
---	--------------------------------------	------

●	14.3 Check grease line condition	PASS
---	----------------------------------	------

●	14.4 Refill grease tank	PASS
---	-------------------------	------

●	14.5 Lubricate bucket linkage	PASS
---	-------------------------------	------

●	14.6 Lubricate blade linkage	PASS
---	------------------------------	------

●	14.7 Lubricate boom & stick linkage	PASS
---	-------------------------------------	------

●	14.8 Lubricate swing gear	PASS
---	---------------------------	------

●	14.9 Lubricate swing bearing	PASS
---	------------------------------	------

PM OPERATOR STATION		
---------------------	--	--

●	15.1 Check all doors for correct opening and closing adjustments and operation	PASS
---	--	------

●	15.2 Inspect condition of door seals	PASS
---	--------------------------------------	------

●	15.3 Check window glass and seal condition	PASS
---	--	------

●	15.4 Check mirror condition and adjustments	PASS
●	15.5 Fill window washer reservoir	PASS
●	15.6 Inspect air con vents condition	PASS
●	15.7 Inspect seat belt and mounting hardware	PASS
●	15.8 Inspect seat condition, operation and mounting	PASS
●	15.9 Replace cabin A/C filter	PASS

OIL SAMPLING

●	16.1 Engine	PASS
●	16.2 Hydraulic System	PASS
●	16.3 LHS Final Drive	PASS
●	16.4 RHS Final Drive	PASS
●	16.5 Swing Transmission	PASS
●	16.6 Coolant	PASS

OIL AND FILTERS

●	17.1 Replace engine oil	PASS
●	17.2 Replace engine oil filter	PASS
●	17.3 Replace primary fuel filter (water separator) element	PASS
●	17.4 Replace secondary fuel filter	PASS

● 17.5 Replace fuel system third filter *PASS*

● 17.6 Replace outer air filter *PASS*

● 17.7 Replace inner air filter *PASS*

● 17.8 Replace cab filter *PASS*



● 17.9 Replace A/C filter *PASS*



● 17.10 Replace hydraulic case drain filter *PASS*

● 17.11 Replace hydraulic pilot filter *PASS*

● 17.12 Replace hammer filter *N/A*

● 17.13 Replace hydraulic oil (4000Hr) *PASS*

● 17.14 Replace swing transmission oil *PASS*

●	17.15 Replace final drive oil	PASS
●	17.16 Replace hydraulic return filter	PASS
●	17.17 Replace Fumes disposal filter	PASS
PM POST SERVICE INSPECTION CHECKS		
●	18.1 All inspections have been completed and rectified as required	PASS
●	18.2 All safety related defects have been repaired or reported	PASS
●	18.3 All defects have been noted and reported	PASS
●	18.4 All fluids are at correct level and drain plugs tight	PASS
●	18.5 All oil samples have visually been inspected and any notable signs of contamination have been reported	PASS
●	18.6 All replaced filters have been cut and inspected and photos added to CAT Inspect and reported to supervisor	PASS
●	18.7 Machine has been recommissioned and ready for operation	PASS
●	18.8 PM service notification marked off in Vision Link	COMPLETED

DEFECTS IDENTIFIED

19.1 DEFECTS IDENTIFIED